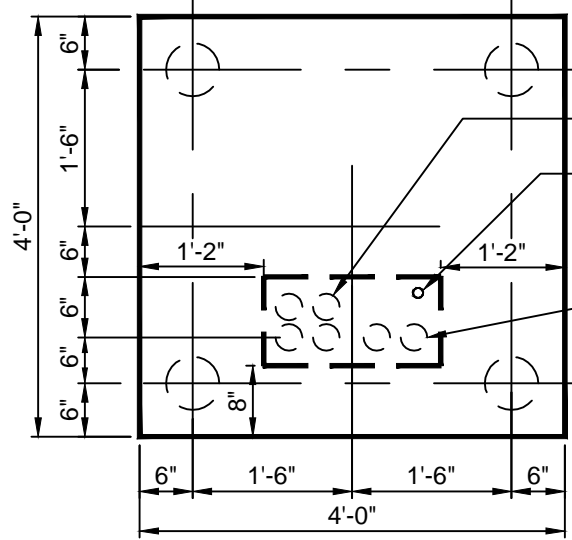


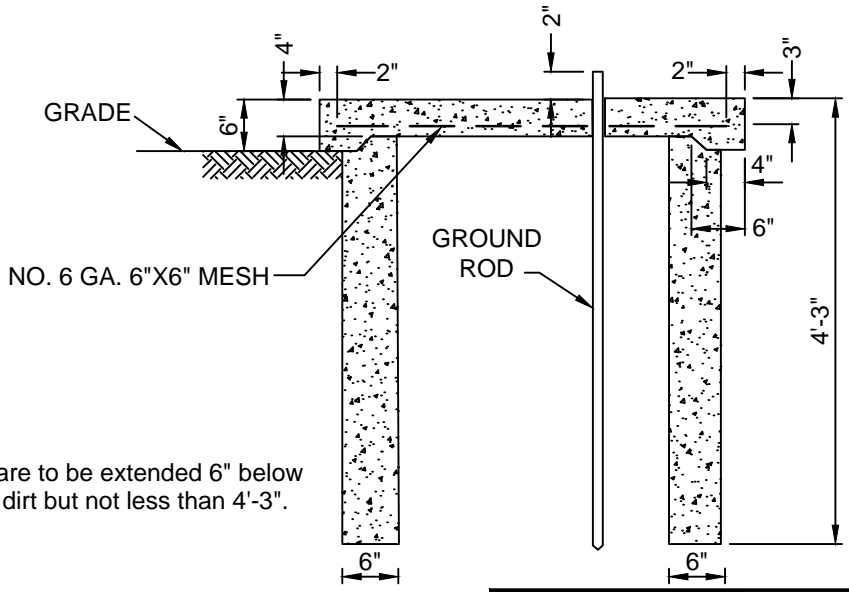
NO. 6 GA. 6"X6" MESH



OPEN SPACE WITH 3" SECONDARY CONDUIT

GROUND ROD

OPEN SPACE WITH 2" PRIMARY CONDUIT



**NOTE:**  
Footings are to be extended 6" below disturbed dirt but not less than 4'-3".

	<b>SOUTHWEST LOUISIANA ELECTRIC MEMBERSHIP CORPORATION</b> LOUISIANA 9 LAFAYETTE		
	<b>SINGLE-PHASE SWITCH CAN OR PADMOUNT TRANSFORMER FOUNDATION</b>		

DRAWN BY:	CREATED ON: 01/16/97	SCALE: N.T.S.
REVISIONS	REVISED BY	DATE

SLEMCO ELECTRICAL STANDARDS		
APPROVED:	DATE:	PAGE NUMBER:
		24

		02/25/97	1	8	3
	L. A. M.	10/13/99	2		
	L. MECHE	10/22/14	3		