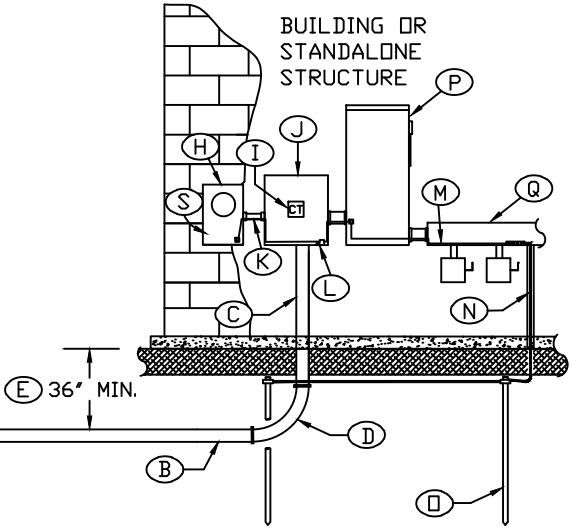
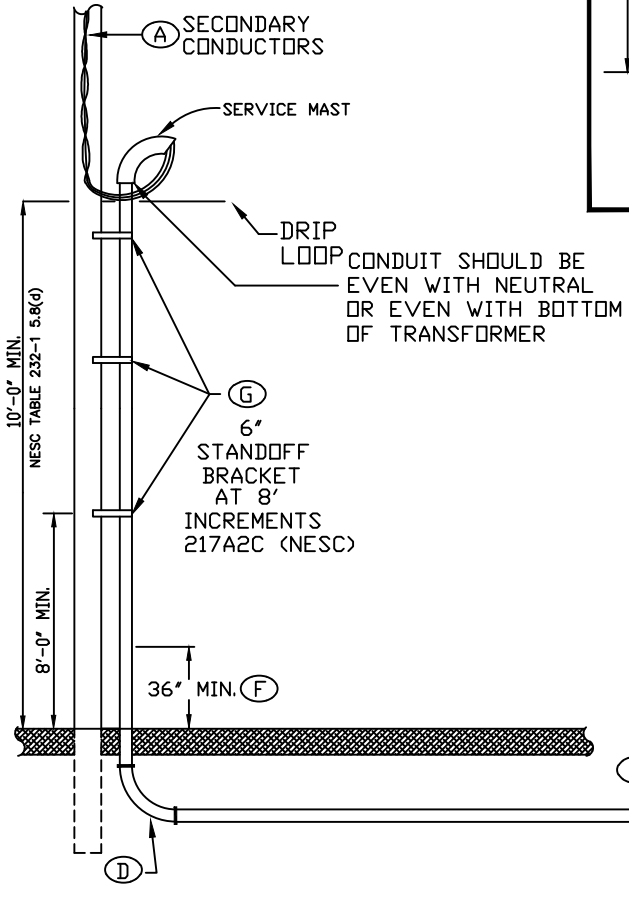
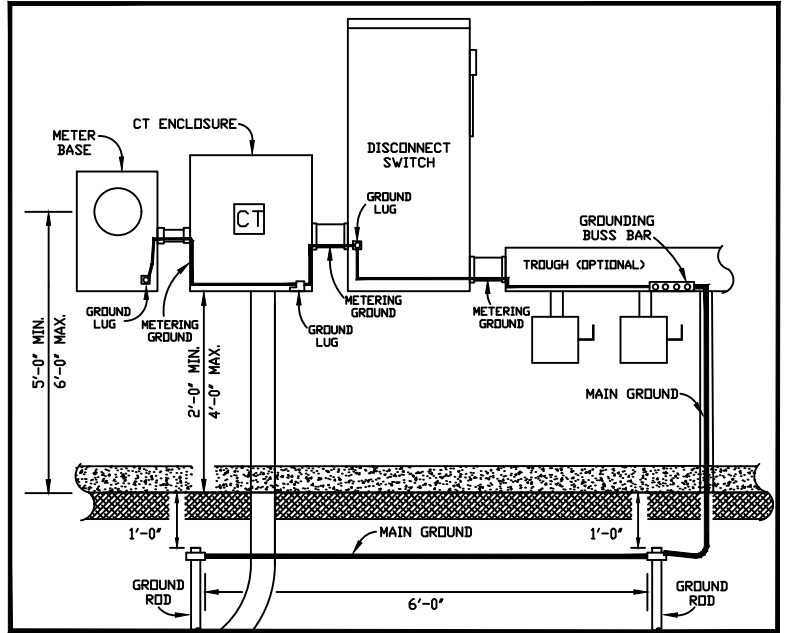


DETAIL



NOTE: APPLICABLE TO BOTH RESIDENTIAL AND COMMERCIAL SERVICES.

RESIDENTIAL

SEE "SLEMCO - SPECIFICATIONS FOR RESIDENTIAL UNDERGROUND CURRENT TRANSFORMER METERING REQUIREMENTS" FOR MORE INFORMATION.

COMMERCIAL

SEE "SLEMCO - SPECIFICATIONS FOR COMMERCIAL UNDERGROUND CURRENT TRANSFORMER METERING REQUIREMENTS FOR A SINGLE-PHASE CUSTOMER" FOR MORE INFORMATION.

	SOUTHWEST LOUISIANA ELECTRIC MEMBERSHIP CORPORATION LOUISIANA 9 LAFAYETTE					
	SINGLE-PHASE CURRENT TRANSFORMER METERING REQUIREMENTS FROM AN OVERHEAD SOURCE					
DRAWN BY: L. A. G.		CREATED ON: 09/08/89		SCALE: N.T.S.		
REVISIONS		REVISED BY	DATE	REV.	DRAWING NO.	REV.
			02/25/97	2	11	5
			07/20/10	3		
ENHANCEMENT TO DRAWINGS & SPECIFICATIONS		L. MECHE	04/21/16	4		
ADDED DISCONNECT SWITCH		D. C.	02/11/19	5		

SLEMCO ELECTRICAL STANDARDS

APPROVED:	DATE:	PAGE NUMBER:
		31