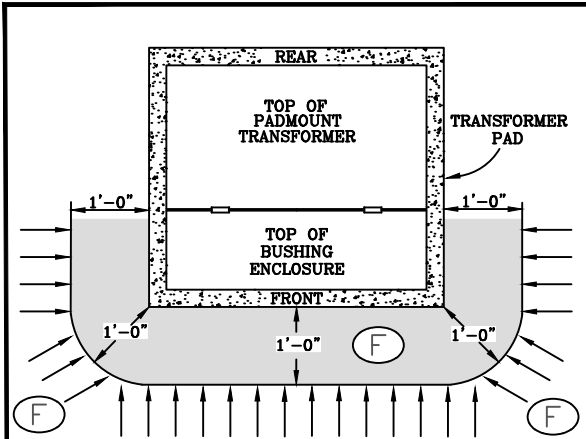
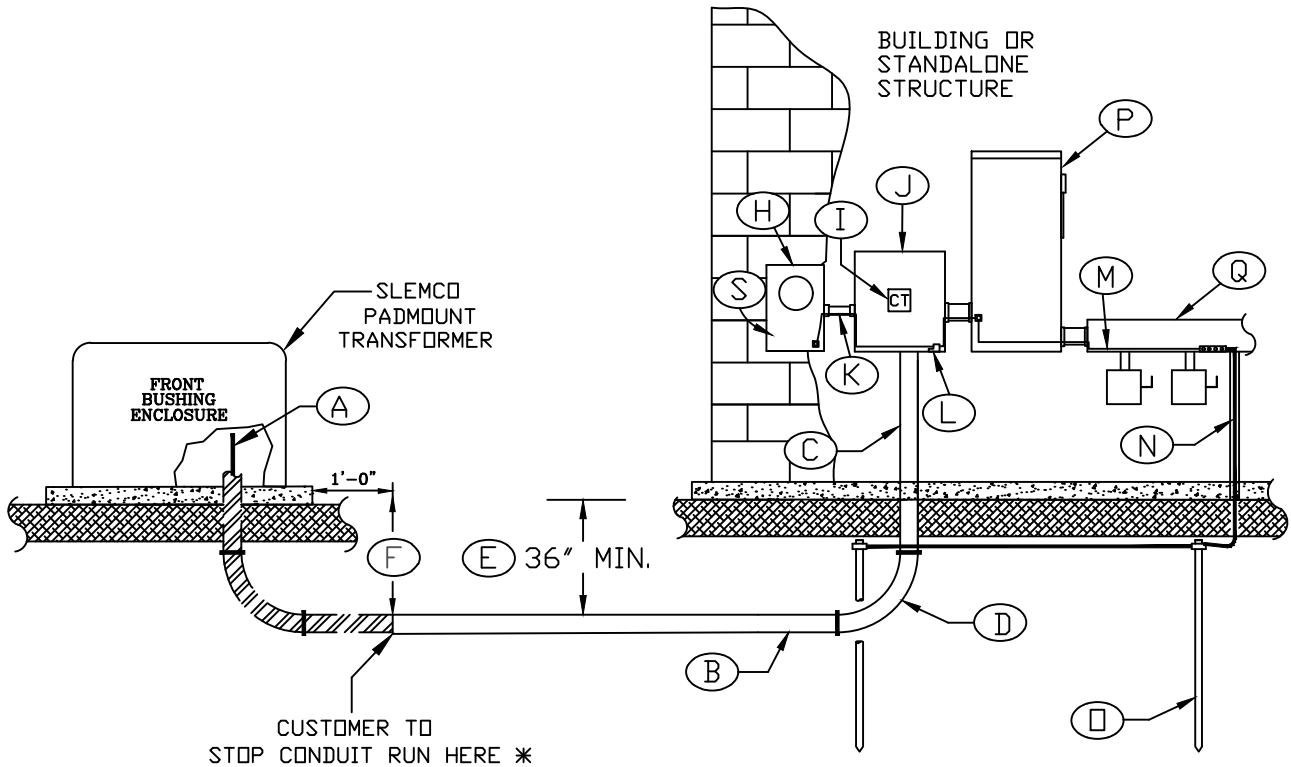
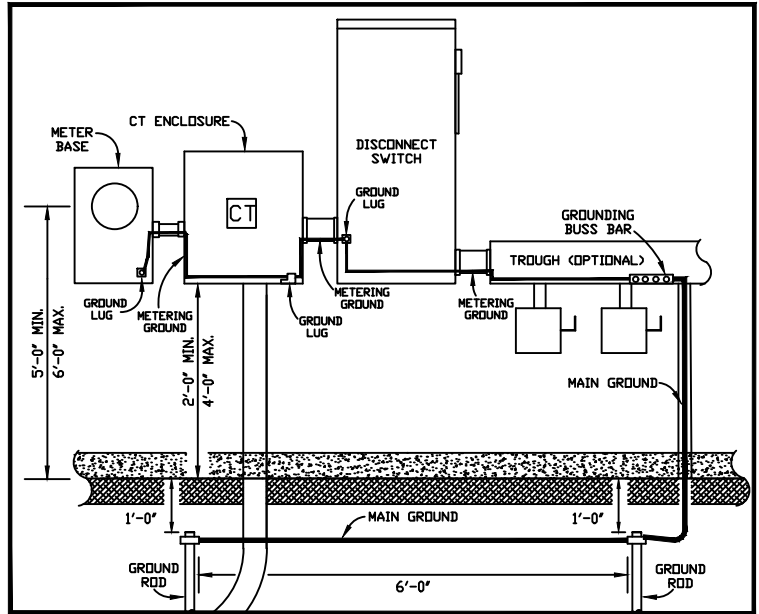


# TOP VIEW



CUSTOMER CONDUIT MUST BE INSTALLED PERPENDICULAR (IN DIRECTION OF ARROWS) TO THE AREA (SHOWN IN GRAY) MARKED AS ONE FOOT FROM EDGE OF PAD SURROUNDING THE BUSHING ENCLOSURE OF THE PADMOUNT TRANSFORMER.

# DETAIL



NOTE: APPLICABLE TO BOTH RESIDENTIAL AND COMMERCIAL SERVICES.

### RESIDENTIAL

SEE "SLEMCO - SPECIFICATIONS FOR RESIDENTIAL UNDERGROUND CURRENT TRANSFORMER METERING REQUIREMENTS" FOR MORE INFORMATION.

### COMMERCIAL

SEE "SLEMCO - SPECIFICATIONS FOR COMMERCIAL UNDERGROUND CURRENT TRANSFORMER METERING REQUIREMENTS FOR A SINGLE-PHASE CUSTOMER" FOR MORE INFORMATION.

- INSTALLED BY SLEMCO
- INSTALLED BY CUSTOMER
- \* STOP CONDUIT RUN 1'-0" FROM PADMOUNT TRANSFORMER PAD OR PEDESTAL EDGE



SOUTHWEST LOUISIANA ELECTRIC  
MEMBERSHIP CORPORATION  
LOUISIANA 9 LAFAYETTE

## SINGLE-PHASE CURRENT TRANSFORMER METERING REQUIREMENTS FROM AN EXISTING PADMOUNT TRANSFORMER

DRAWN BY: L. A. G.		CREATED ON: 09/09/89		SCALE: N.T.S.	
REVISIONS	REVISED BY	DATE	REV.	DRAWING NO.	REV.
ENHANCEMENT TO DRAWINGS & SPECIFICATIONS ADDED DETAILS FROM PAD	L. MECHE	07/20/10	1	9	3
ADDED DISCONNECT SWITCH	D. C.	01/26/16	2		
		02/11/19	3		

### SLEMCO ELECTRICAL STANDARDS

APPROVED:	DATE:	PAGE NUMBER:
		29